

BizInsight 5.5 SP2 (5.0.34.4)

Release Notes

BizInsight 5.5 SP2 (5.0.34.4)

Build 34.4

March 17, 2014

Copyright Notice

BizNet Software, Inc makes no representations or warranties with respect to the contents of this document and specifically disclaims any implied warranties of merchantability or fitness for any particular purpose.

We welcome user comments and reserve the right to revise this publication and to make improvements or changes to the products and programs described in this publication at any time without notice.

Mailing Address:

BizNet Software, Inc.
14785 Preston Rd.
Suite 800
Dallas, TX 75254

Phone:

1-888-803-5227

Web Site:

www.biznetsoftware.com

© Copyright 2014 by BizNet Software, Inc. All rights reserved.

Printed in the United States of America

No part of this publication may be reproduced in any form without the prior written consent of BizNet Software, Inc.

Trademarks

BizInsight is a registered trademark of BizNet Software, Inc.

Windows and Microsoft Excel are registered trademarks of Microsoft Corp.

All other trademarks are acknowledged.

1. New Features	1
1.1 Expression Editor (Analysis Sets Only)	1
2. Product Enhancements	2
2.1 Windows 8 and Office 2013 32bit/64bit Support. SQL Server 2012 Support (Analysis Sets Only)	2
2.2 Application Settings Dialog Support	2
2.3 Cancel BizNet Refresh Processing	3
2.4 Errors and Events Captured in Event Logs	4
2.5 Query Timeout Setting for Support Troubleshooting (Analysis Sets Only)	4
2.6 BizInsight Warning Prompt on Close For Saving Changes to the Navigation Pane	5
2.7 Launch Expression Editor - Advanced on Startup	6
2.8 BizInsight Offline Mode is a Toggle Button (Office 2007 and higher)	6
2.9 BizInsight Load at Startup Prompt Messaging	6
2.10 Switching Metadata Connection Prompts Message Box to Close All Workbooks	7
3. Issues Resolved	9
3.1 Multi-Monitor Dialog Support	9
3.2 Invalid Licenses and Multiple licenses in the AdminPath Prompt	10
3.3 Improved Exception Logging When Refreshing Analysis Sets	10
3.4 ScanForContent Improvement for Citrix/Terminal Services Implementations	10
3.5 SSRS 2008 R2 Requires XMLFAST to be Enabled in BizInsight. (Analysis Sets Only)	11
3.6 New Trial Mode message prompt when users switch Windows OS region date format	11
3.7 Excel 2013 Drill-down breaks with functions containing more than 255 characters	11
3.8 Application Setting Allows HTTPS protocol	12
3.9 BizInsight Viewer (Power) User Issue When Deleting Multiple Columns	12

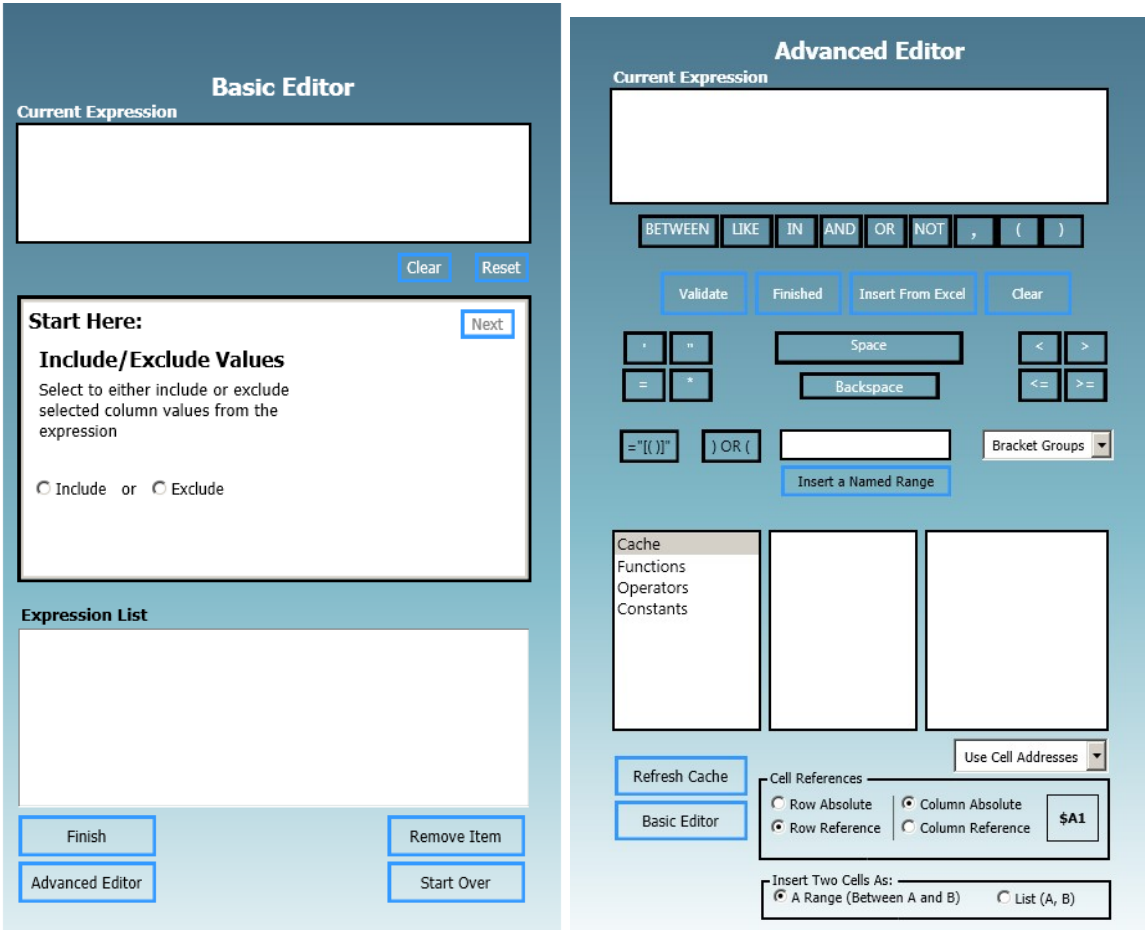
3.10 BizInsight Developer users loss of features with multiple workbooks at Load at Start Up	12
3.11 Problems with Reporting Services Folder Name Change with Previously Created Workbooks (Analysis Sets Only)	13
3.12 New error message when BizInsight right-click menu becomes disabled	13
3.13 Trial Mode Displays Incorrect Expiration Date in Region Date Settings	14
3.14 Unhandled Exception when Drill-Down Sheet Position is Changed	14
4. Known Issues	15

1. New Features

1.1 Expression Editor (Analysis Sets Only)

The Expression Editor is a task pane input box in Excel that enables a user to write logical expressions based on fixed values, logical operations, and functions. The basic editor environment is recognized for ease of use expression building that auto completes expressions and error checks. The advanced editor environment provides the more experienced report builder all of the basic editor benefits with additional control over the operators and function types. The application requires BizInsight build 5.0.34.4 or later and supports Office 2007, 2010, and 2013.

Refer to the Expression Editor section of the User Guide for further details.



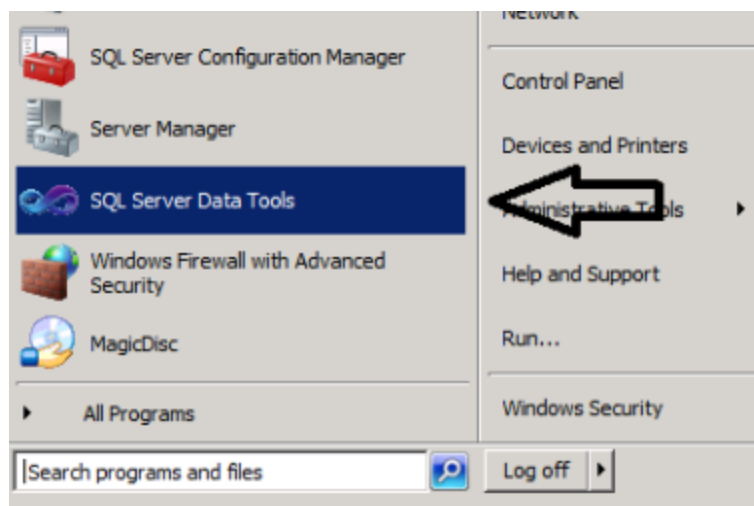
2. Product Enhancements

2.1 Windows 8 and Office 2013 32bit/64bit Support. SQL Server 2012 Support (Analysis Sets Only)

 Windows 8



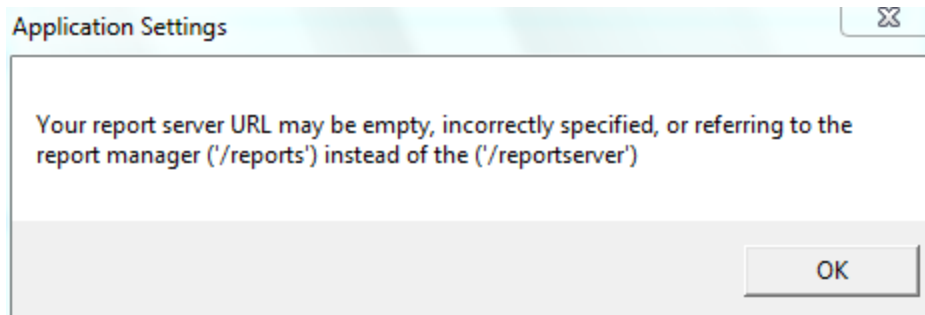
 Microsoft SQL Server 2012



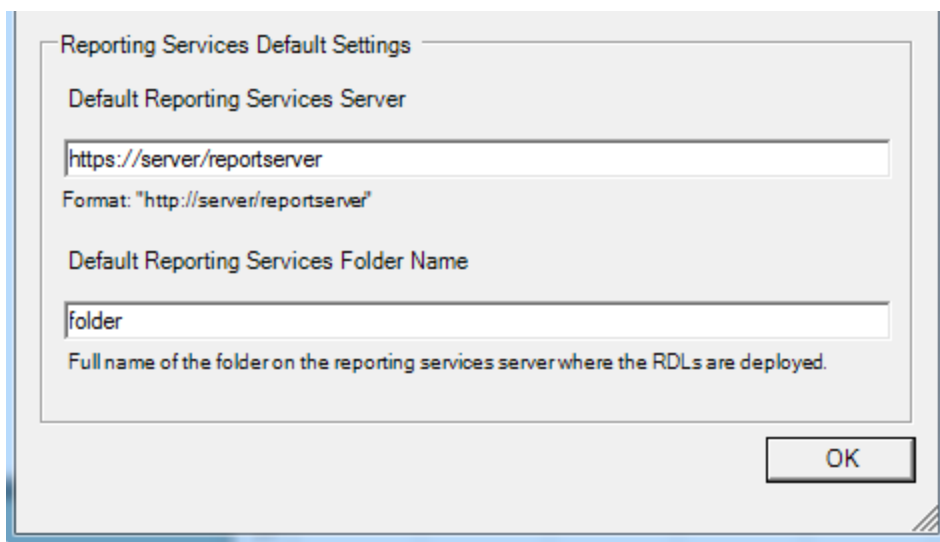
SQL Server Data Tools is embedded in Visual Studio (aka Microsoft BIDS Project)

2.2 Application Settings Dialog Support

Users are provided an error prompt if the Reporting Services path contains syntax issues.

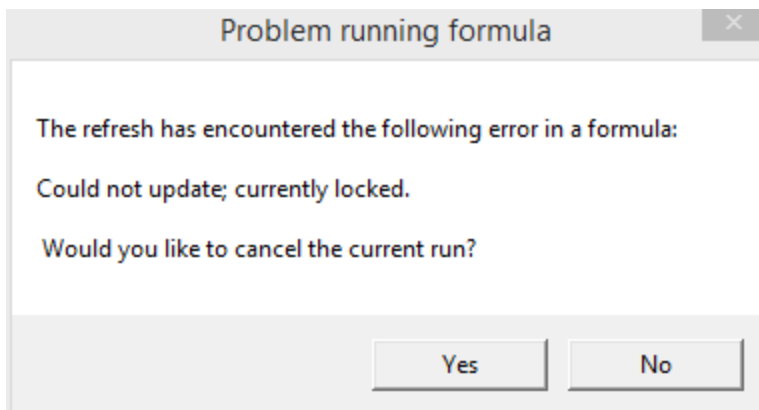


The Default Reporting Service Server field also now accepts HTTPS protocols.



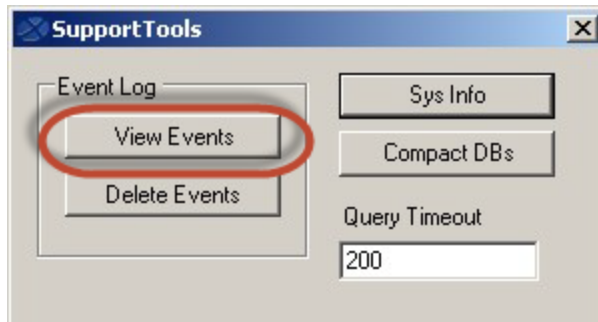
2.3 Cancel BizNet Refresh Processing

The product has been updated to provide users the ability to cancel a refresh when errors occur.



2.4 Errors and Events Captured in Event Logs

A new event log has been added to the product and error capture has been improved. The log is access from the **About** button on the BizInsight ribbon and by clicking on the **Support Tools** button.



2.5 Query Timeout Setting for Support Troubleshooting (Analysis Sets Only)

There are many different types of timeouts in reporting services and data connections.

Setting Time-Out Values for Report and Shared Dataset Processing (SSRS): [http://msdn.microsoft.com/en-us/library/ms155782\(v=sql.105\).aspx](http://msdn.microsoft.com/en-us/library/ms155782(v=sql.105).aspx)

ReportExecutionService Class –This class is used to execute reports in reporting services with XMLFAST disabled : [http://msdn.microsoft.com/en-us/library/reportexecution2005.reportexecutionservice_members\(v=sql.100\).aspx](http://msdn.microsoft.com/en-us/library/reportexecution2005.reportexecutionservice_members(v=sql.100).aspx) –See Timeout property

ReportingService2005 Class – This class is used to work with metadata on the server (RDLs and RDS): [http://msdn.microsoft.com/en-us/library/reportservice2005.reporting-service2005_members\(v=sql.100\).aspx](http://msdn.microsoft.com/en-us/library/reportservice2005.reporting-service2005_members(v=sql.100).aspx) – See Timeout property

The first article states:

“Most time-out errors occur during query processing. If you are encountering time-out errors, try increasing the query time-out value. Make sure to adjust the report execution time-out value so that it is larger than the query time-out. The time period should be sufficient to complete both query and report processing.”

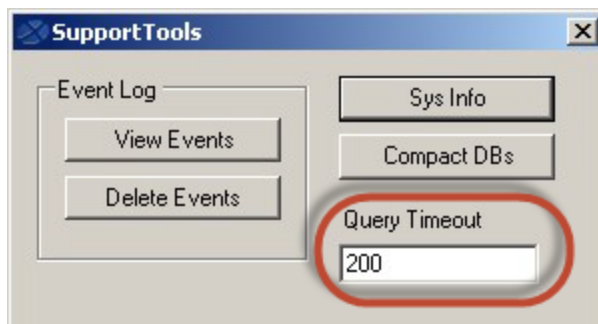
When using SQLClient data types such as:


```
Dim lconn As New SqlConnection()  
Dim lda As New SqlDataAdapter()  
Dim lcmd As New SqlCommand()
```

SqlCommand.CommandTimeout Property: <http://msdn.microsoft.com/en-us/library/system.data.sqlclient.sqlcommand.commandtimeout.aspx>

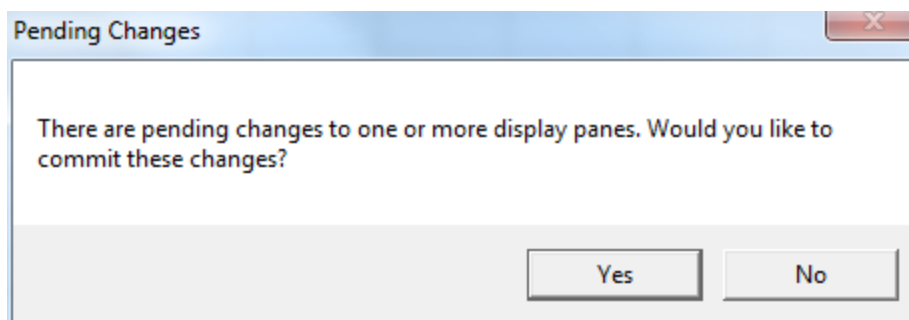
SqlConnection.ConnectionTimeout Property: <http://msdn.microsoft.com/en-us/library/system.data.sqlclient.sqlconnection.connectiontimeout.aspx>

Query time-outs are typically a connection CommandTimeout. The CommandTimeout setting is now configurable in BizInsight under XMLFAST options. The default CommandTimeout for XMLFAST is 200 seconds. The default ConnectionTimeout for XMLFAST is 15 seconds.



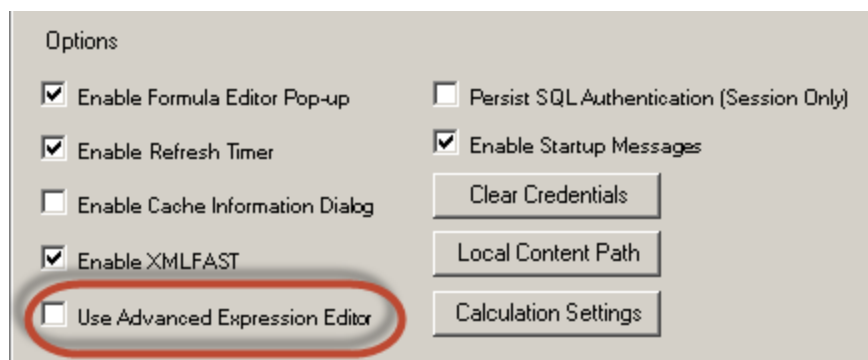
2.6 BizInsight Warning Prompt on Close For Saving Changes to the Navigation Pane

When a Designer user makes a change in the Navigation Pane and closes Excel before saving those changes, a dialog will now be displayed to give the opportunity to save changes.



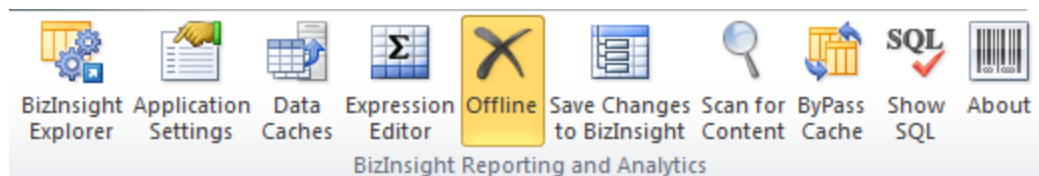
2.7 Launch Expression Editor - Advanced on Startup

A new option has been added to the Application Settings dialog to allow users to configure the Expression Editor to open to the Advanced Editor dialog when opened instead of the Basic Editor.



2.8 BizInsight Offline Mode is a Toggle Button (Office 2007 and higher)

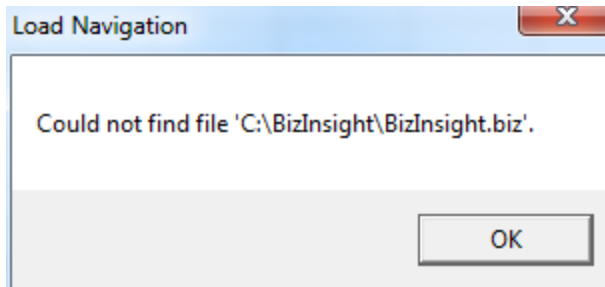
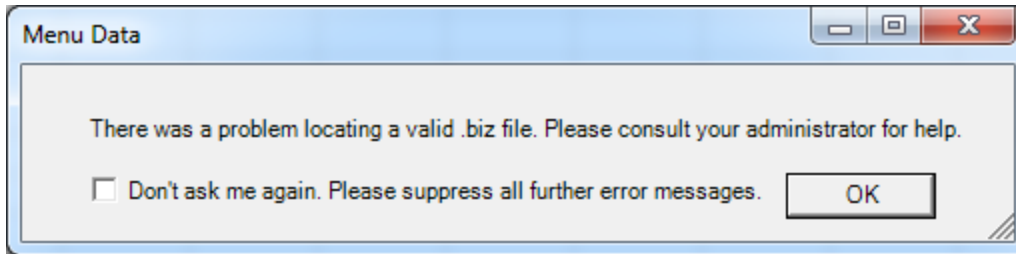
The Offline button on the BizInsight ribbon is now a toggle. When the button is highlighted, BizInsight is offline as shown below.



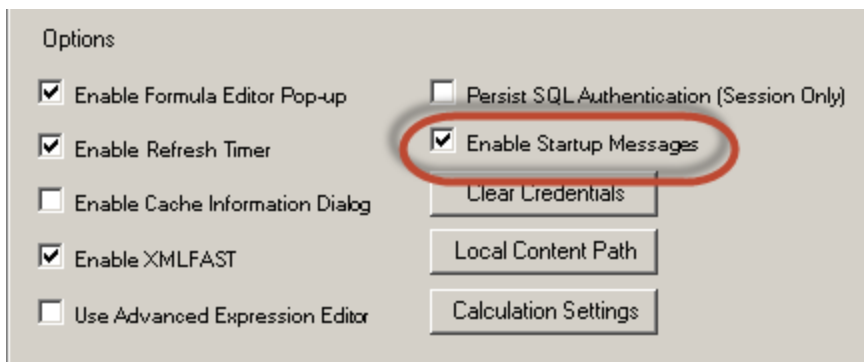
2.9 BizInsight Load at Startup Prompt Messaging

When BizInsight is activated, the application verifies the configuration path and presence of biz files in a valid folder path. If the configuration path or biz files are missing, BizInsight will prompt the user to select the new option to suppress all further warning messages. Check the “Don’t ask me again” box to suppress further warning messages. In the Application Settings, the warning messages can be reactivated by enabling the warning message.

When “Don’t ask me again” check box is checked, the below two warning messages are suppressed in future loads.

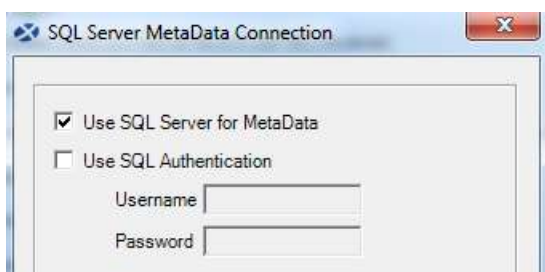


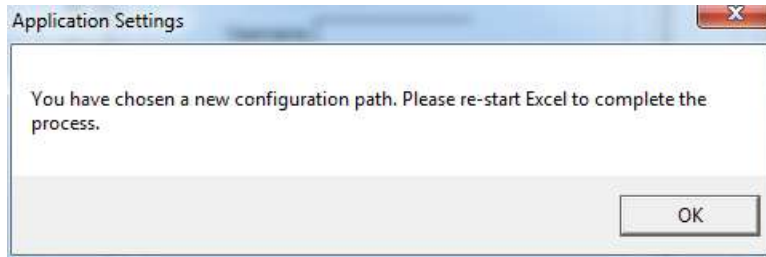
Users can re-enable the warning messages in the Application Settings and check the “Enable Startup Messages” check box.



2.10 Switching Metadata Connection Prompts Message Box to Close All Workbooks

Users switching from Configuration Path folder to SQL Metadata connection in the Application Settings are required to restart Excel to reload BizInsight Navigation Pane. A new message prompts users to close Excel.





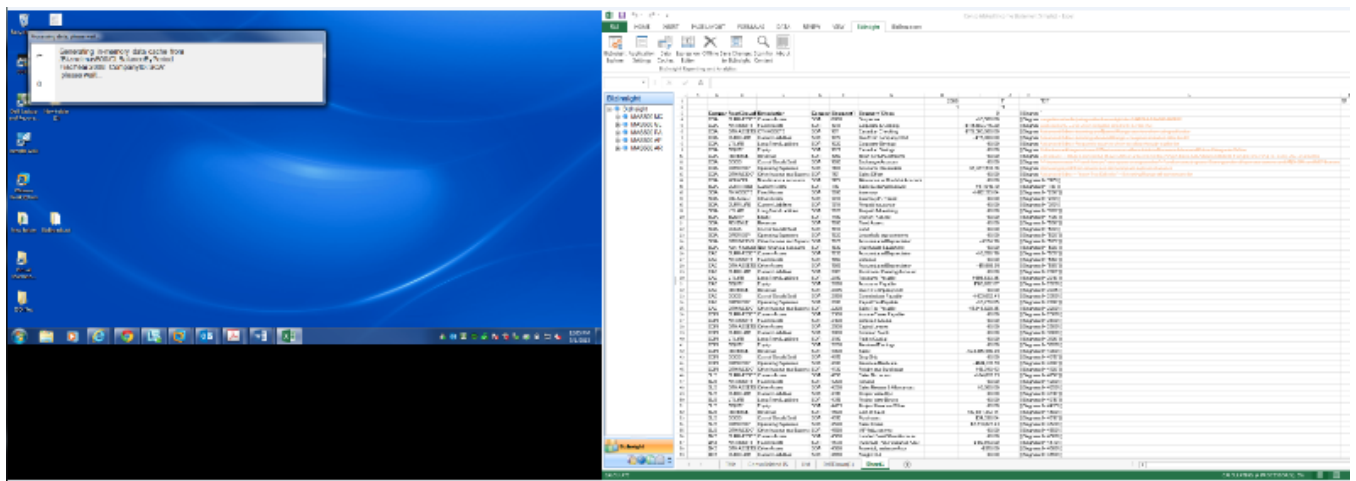
3. Issues Resolved

3.1 Multi-Monitor Dialog Support

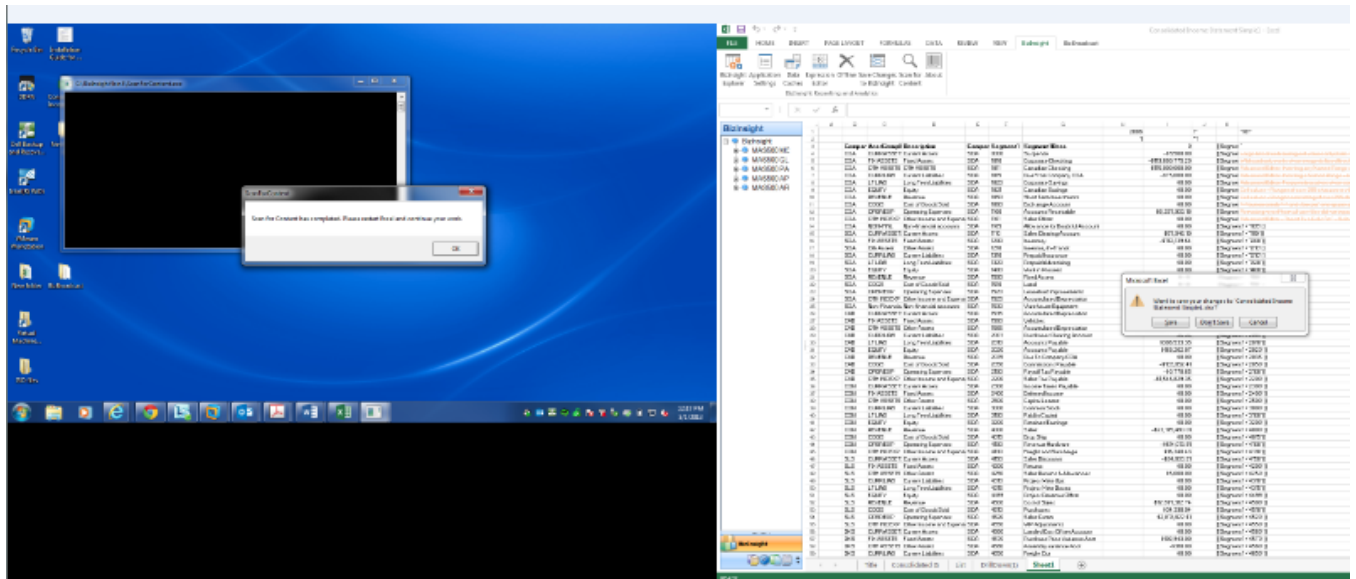
BizInsight is able to detect whether Excel is on the main display or on an extended display. All prompts will be displayed on the active Excel monitor.

There are two dialogs that will continue to display on the active display monitor are the caching and Scan for Content prompts. Users are able to disable caching prompts in the Application Settings dialog.

Caching prompts

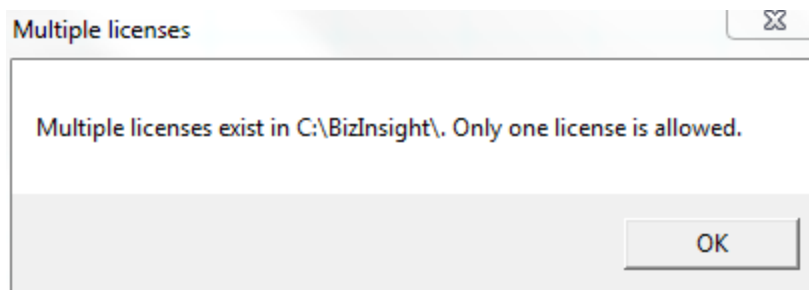


Scan for Content prompt

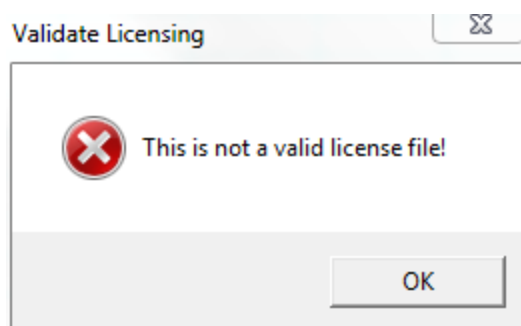


3.2 Invalid Licenses and Multiple licenses in the AdminPath Prompt

BizInsight will now display a message when multiple license files (.lic) are found in the Administration Path.



If an invalid license is detected in the Administration Path, BizInsight will now display a message to alert you to the problem.



3.3 Improved Exception Logging When Refreshing Analysis Sets

In previous releases, when an error occurred refreshing an analysis set in the workbook, users would have to click OK to those messages to be able to continue the refresh. Errors will now silently fail when exception is thrown and all errors will be logged in the Error log. Check the error log from the About button to review those exceptions.

3.4 ScanForContent Improvement for Citrix/Terminal Services Implementations

In previous releases of BizInsight, the ScanForContent process would detect Excel.exe for other users on terminal services environments preventing it from being used in those imple-

mentations. The check to wait is removed and will commence running regardless of the state of Excel.exe.

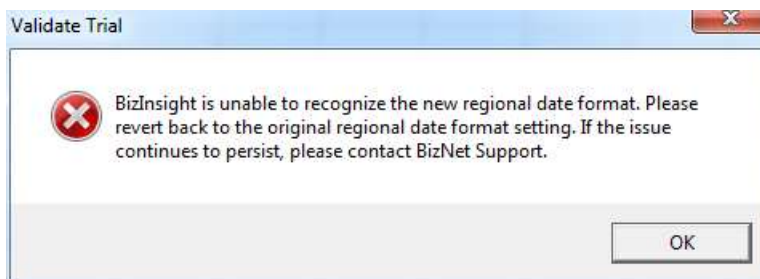
ScanForContent should not be used in a Terminal Services implementation when user profiles are remapped to network directories. Refer to the Citrix/Terminal Services Installation Guide for additional guidance on implementing BizInsight in a Terminal Services or Citrix environment.

3.5 SSRS 2008 R2 Requires XMLFAST to be Enabled in BizInsight. (Analysis Sets Only)

Support was removed for the ATOM Feed feature of SQL Server Reporting Services 2008 R2. Users will receive the error prompt, “This version of SQL Server does not support XML Export, please use XMLFAST under Application Settings” and will be given the option to cancel.

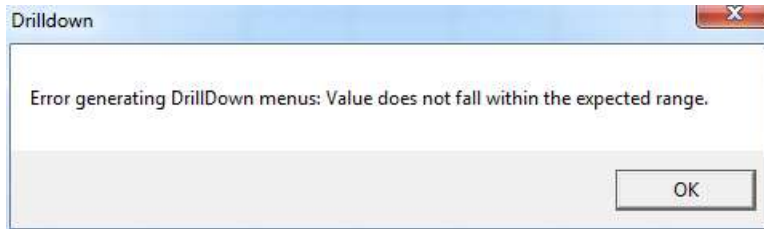
3.6 New Trial Mode message prompt when users switch Windows OS region date format

Trial Mode fails if the user changes the region date settings on their local machine after BizInsight has been installed. A new message informs the user of the region date format change and requires the local machine to revert back to the original regional date format. This issue or message does not occur with a licensed BizInsight.



3.7 Excel 2013 Drill-down breaks with functions containing more than 255 characters

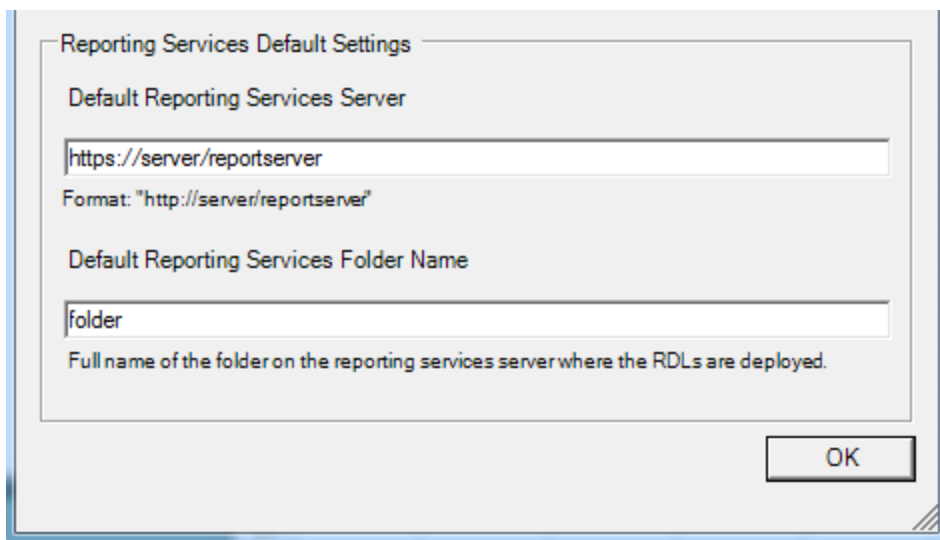
In previous Excel compatible BizInsight releases, users on Excel 2013 were unable to drill-down on a function when the function contains more than 255 characters combined and would receive the following error message:



This issue has been addressed and users are now able to drill-down on functions without a 255 character restriction.

3.8 Application Setting Allows HTTPS protocol

In the Application Settings, the Default Reporting Services Server accepts HTTPS protocols.



3.9 BizInsight Viewer (Power) User Issue When Deleting Multiple Columns

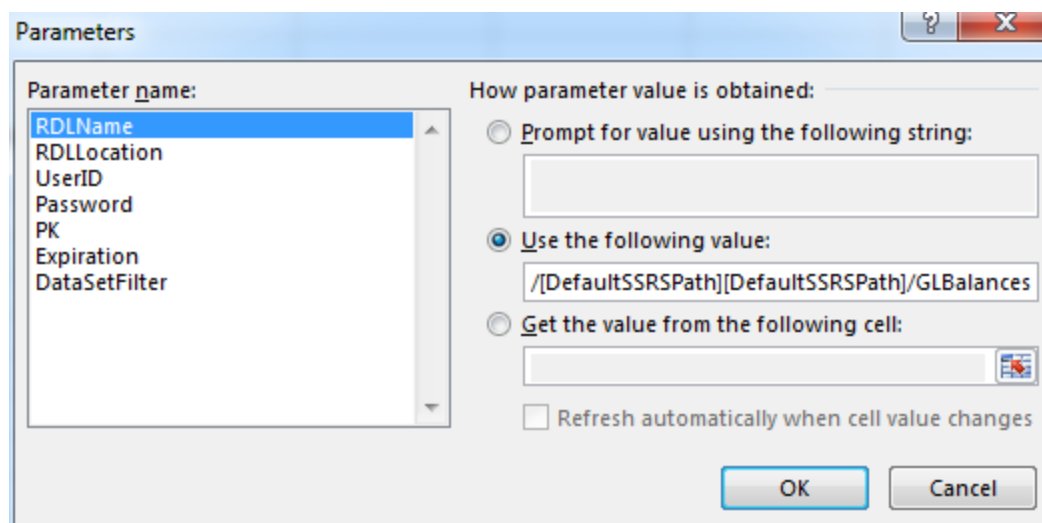
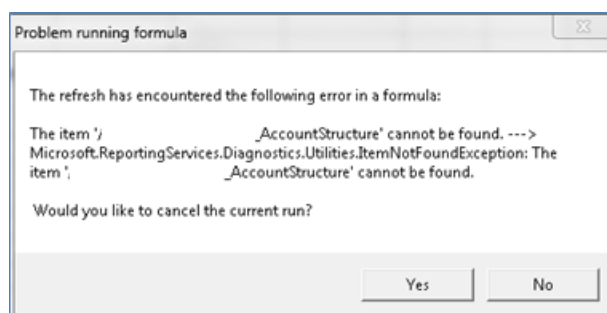
Viewer (Power) users were receiving an out of memory exception message when deleting multiple columns from a worksheet. This issue has been resolved in this release.

3.10 BizInsight Developer users loss of features with multiple workbooks at Load at Start Up

Primarily in Office 2013, BizInsight Developer Users experienced a loss of features in other workbooks when multiple Excel instances were opened. This issue has been resolved in this release to support multiple Excel instances.

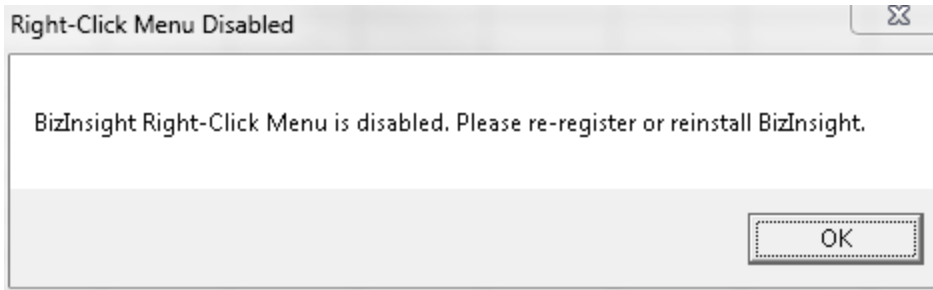
3.11 Problems with Reporting Services Folder Name Change with Previously Created Workbooks (Analysis Sets Only)

In a situation when the user has fully installed BizInsight and deployed all content pack files into the Reporting Services folder, an issue occurs with existing workbooks containing Analysis Sets. The workbooks retain information about the location of the Reporting Services folder. When the Reporting Services folder is renamed to the same name as the content RDLName, Analysis Sets in previously built workbooks fail to refresh. The issue occurs in the Analysis Sets parameter which the value [DefaultSSRSPath] is duplicated twice due to the renaming of the folder.



3.12 New error message when BizInsight right-click menu becomes disabled

When the right-click menu does not display, BizInsight users will be prompted to re-register or reinstall BizInsight to resolve the issue.

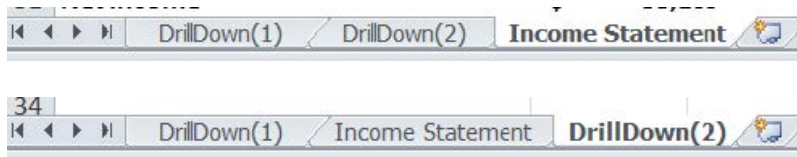


3.13 Trial Mode Displays Incorrect Expiration Date in Region Date Settings

When using BizInsight in Trial Mode, the About dialog would display an incorrect expiration date if the user changes the regional date settings on their local machine after BizInsight was been installed. This issue has been addressed.

3.14 Unhandled Exception when Drill-Down Sheet Position is Changed

When a user drills-down on a function and then changes the position of the drill-down sheet to another position, the user received an error when attempting to drill-down on another function or performed a BizNet Refresh. For example, if Drilldown(2) is moved from before the sheet named Income Statement to after, the exception would occur.



This issue with repositioning of worksheets has been resolved.

4. Known Issues

1. ScanForContent Exception using Mapped Network Drives

Network drives use Uniform Naming Convention (UNC) syntax to define the location of a device on a network that applies to all operating systems, even though particular operating systems have their own network mapping protocols. Mapped drives, however, are specific to certain computers. Windows mapped drives represent shared drives on the network, but map them to internal Windows drives denoted by a letter or directory name. The difference is that a mapped drive is a network location that is treated in the same manner as a local hard drive and is merely bookmarking the UNC location on the local machine.

Mapped Drive: Z (pointing to \\server\share\file_path)

Network Drive: \\server\share\file_path

ScanForContent does not support mapped drives. A mapped drive cannot be used in for the Administration Path or the Configuration Path in the Application Settings dialog.

The failures seem to be related to several factors:

- a. The credentials used in the mapped drive.
- b. If the mapped drive has been accessed already during the logon session.
- c. User Account Control.

The issue does not occur when using a full network drive name (\\server-name\sharename) or a local drive (c:\).

2. Most errors when using F2 return #VALUE!

When using F2 to refresh a function, any errors that may occur will not be presented to the user and the cell will update with #VALUE. Go to **About > Support Tools > View Events** to see the cause of the #VALUE.

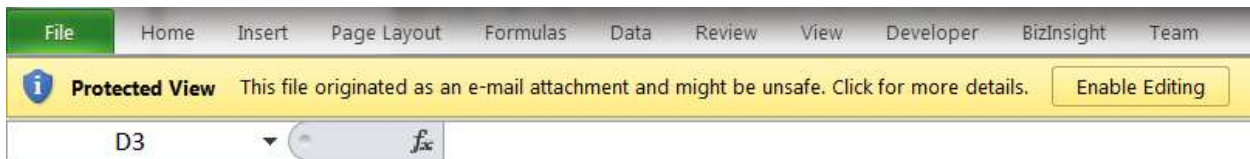
3. Scan for Content throws an exception on Office 64-bit versions when moving from one set of Content Packs to another

For example, if a user is currently using SunGard GL and wishes to switch to another configuration folder containing a different set of Content Packs, ex: SunGard AP and SunGard AR, ScanForContent throws an exception when it is not able to find the SunGard GL 64-bit files in the content path. This should occur rarely in customer environments, but developers might encounter this error. The workaround is to manually register the new 64-bit content.

4. Best practice for BizInsight setup and ScanForContent feature:

Install BizInsight > Open Excel > Click BizInsight Explorer ribbon button > Close Excel > Open Excel > Click Application Settings button and configure if needed > Click Scan for Content button > Close all Excel sessions > Open Excel.

BizInsight Workbooks requires users to enable Excel Protected View



- 5.

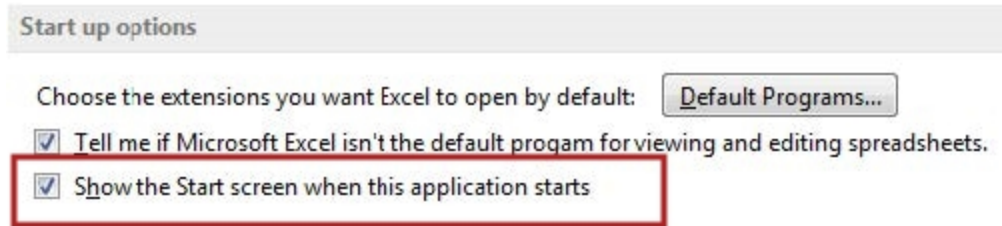
Protected View is a read-only mode where most editing functions are disabled. There are several reasons why a file opens in Protected View.

If you only need to read the workbook, and not edit it, you can remain in Protected View, but without BizInsight features enabled. If you know the workbook is from a trustworthy source, you can save the workbook locally on your computer. After you save it on your computer locally, it becomes a trusted document and BizInsight features will be enabled.

<http://office.microsoft.com/en-us/excel-help/what-is-protected-view-HA010355931.aspx>

6. Microsoft Office Excel 2013 Disable Start Screen Issue

In Excel 2013, a new feature allows users to disable the Excel Start screen.



This option causes a different behavior with BizInsight workbooks. If Excel is launched first, regardless of whether BizInsight is loaded on-demand or at start-up, the workbook functions return a #VALUE! BizNet recommends that users who disable their Excel Start Screen open the workbook file first rather than launching the Excel application.

BizInsight Load On-Demand: Open a BizInsight workbook > launch BizInsight > open other BizInsight workbooks

BizInsight Load at Start-Up: Open a BizInsight workbook > open other BizInsight workbooks